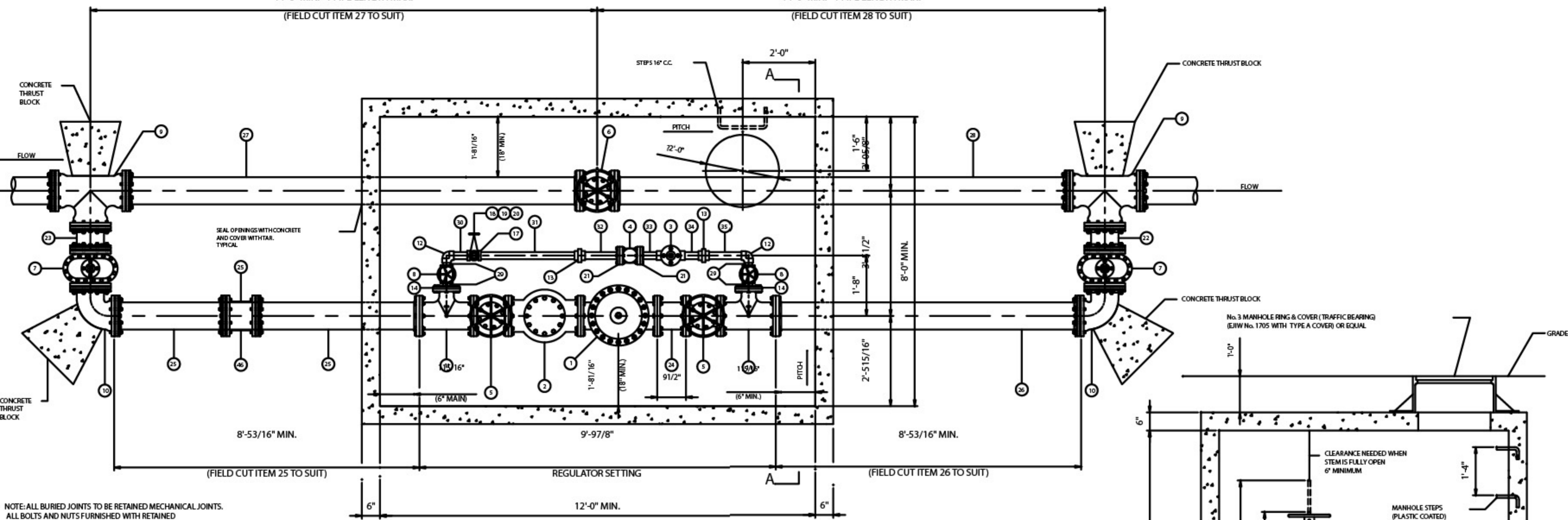


14'-0" MIN. - 1 PIPE LENGTH MAX.

14'-0" MIN. - 1 PIPE LENGTH MAX.

(FIELD CUT ITEM 27 TO SUIT)

(FIELD CUT ITEM 28 TO SUIT)



PLAN

NOTE: ALL BURIED JOINTS TO BE RETAINED MECHANICAL JOINTS.  
 ALL BOLTS AND NUTS FURNISHED WITH RETAINED MECHANICAL JOINTS INCLUDING RETAINER OR WEDGE ACTION TYPE GLANDS SHALL BE COPPER-BEARING DUCTILE IRON, OR EQUIVALENT HIGH STRENGTH, LOW ALLOY CORROSION RESISTANT STEEL.

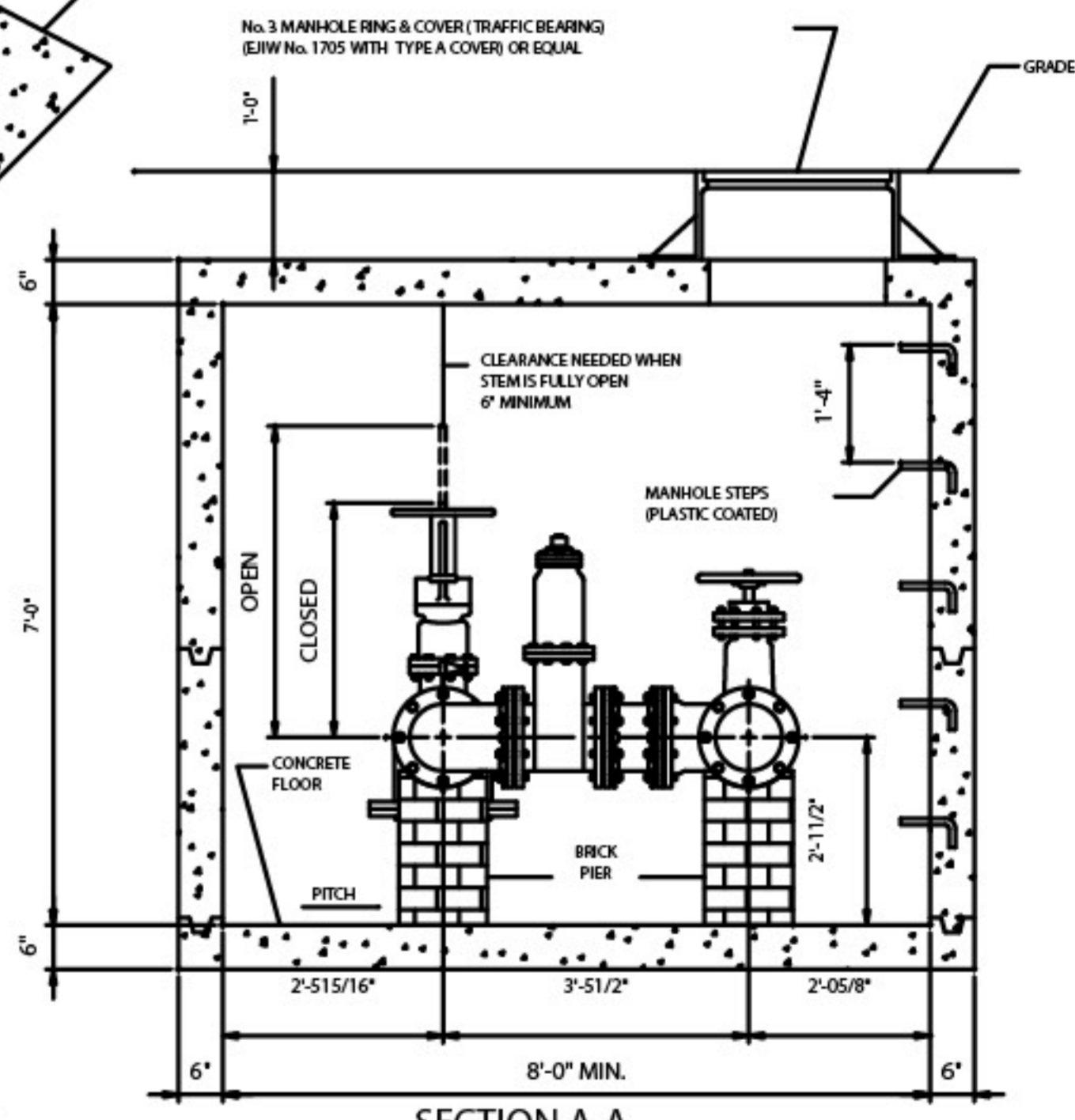
NOTE: PITCH VAULT TOWARD MANHOLE ACCESS.

ALL CONCRETE SHOULD BE CLASS "A".

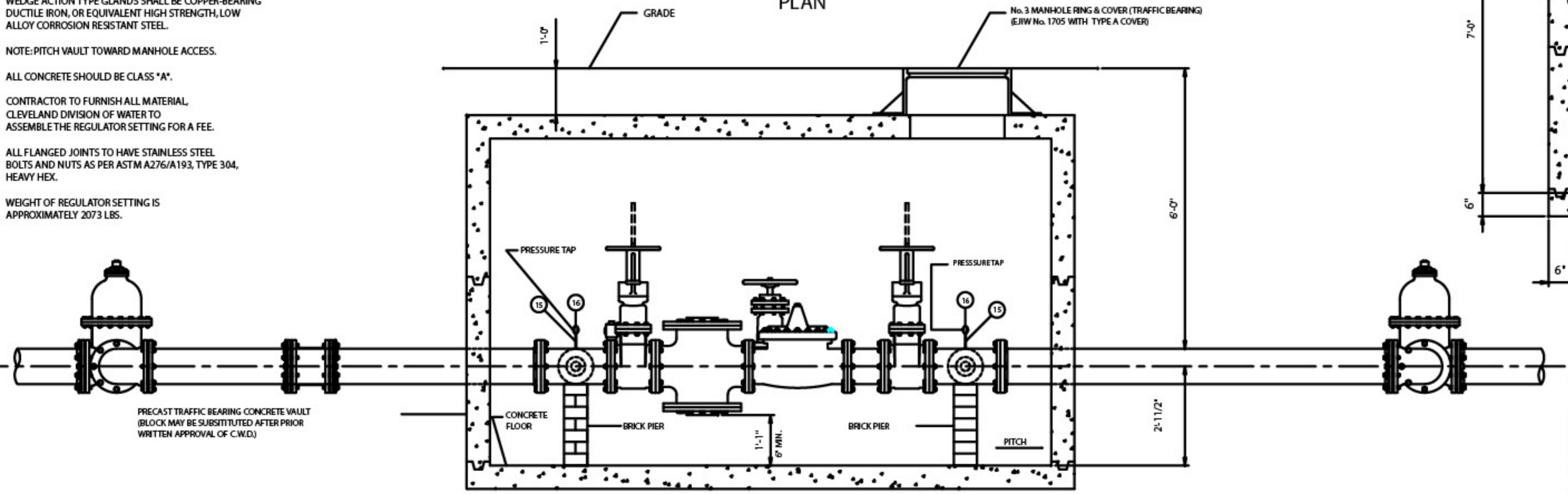
CONTRACTOR TO FURNISH ALL MATERIAL, CLEVELAND DIVISION OF WATER TO ASSEMBLE THE REGULATOR SETTING FOR A FEE.

ALL FLANGED JOINTS TO HAVE STAINLESS STEEL BOLTS AND NUTS AS PER ASTM A276/A193, TYPE 304, HEAVY HEX.

WEIGHT OF REGULATOR SETTING IS APPROXIMATELY 2073 LBS.



SECTION A-A



ELEVATION

REVISIONS		
No.	DATE	BY

**STANDARD DETAILS**

DEPARTMENT OF PUBLIC UTILITIES  
 DIVISION OF WATER  
 CLEVELAND, OHIO

SUBJECT  
**8" REGULATOR IN VAULT**

DRAWN BY RSK  
 DATE 10-1-1997

CHECKED BY MUS DATE 10-1-1997

-SCALE-  
 = 1/8" = 1'-0"

No. REG8