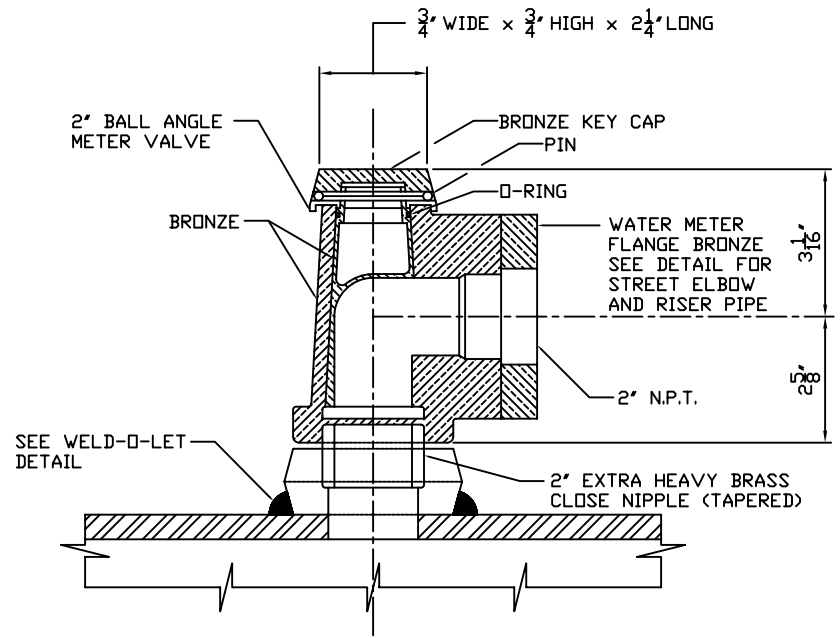
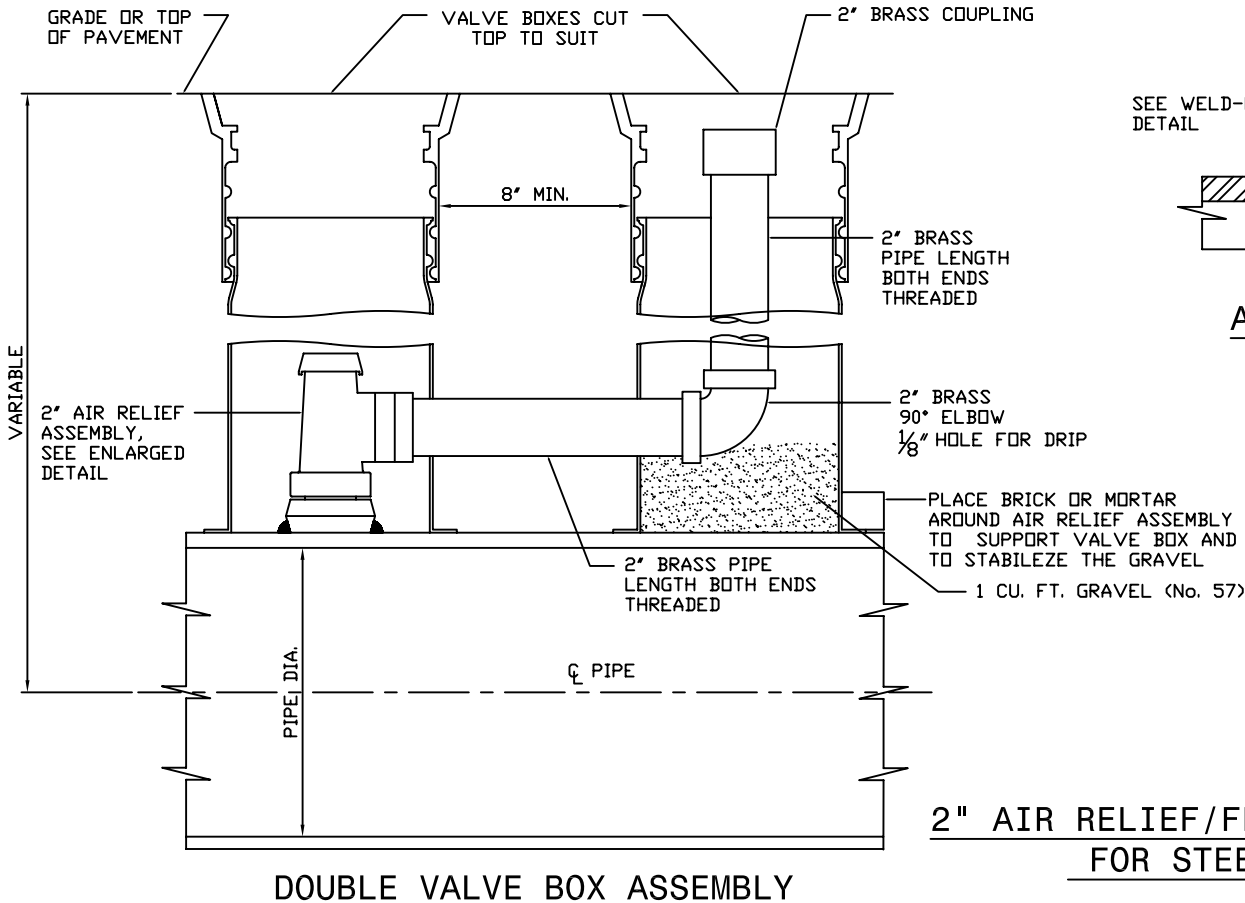
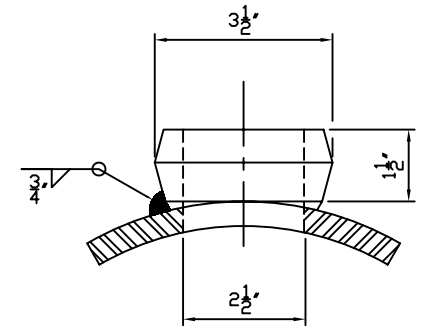


NOTE: AIR RELIEF VALVE BOX(ES) INSTALLED ON BRIDGE DECK(S) SHALL HAVE INTEGRAL, OR FABRICATED AND SECURELY FASTENED, LUGS OR A RING WHICH WILL ANCHOR THE BOX(ES) INTO THE DECK SLAB, AS APPROVED BY THE ENGINEER.



AIR RELIEF VALVE ASSEMBLY



WELD-O-LET DETAIL

2" AIR RELIEF/FLUSHING OUTLET VALVE FOR STEEL WATER MAINS